

LOUISIANA CLIMATE ACTION PLAN

EXECUTIVE SUMMARY



CLIMATE INITIATIVES TASK FORCE
RECOMMENDATIONS TO THE GOVERNOR

February 2022



STRATEGIES AND ACTIONS FOR REACHING NET ZERO GREENHOUSE GAS EMISSIONS BY 2050

OBJECTIVES

The primary objective of this plan is to reduce net greenhouse gas (GHG) emissions to zero by 2050 in order to limit the impacts of climate change that harm the state's natural and cultural heritage. While reducing GHG emissions is the primary objective, how Louisiana gets there matters. Climate action provides an opportunity to realize additional benefits for Louisiana's communities, environment, and economy. The plan identifies clear objectives across the following seven themes that serve as a fundamental basis for developing, evaluating, and refining strategies and actions and guiding implementation.



Reduce
Net GHG
Emissions



Improve
Health &
Quality of Life



Create a More
Equitable
Society



Strengthen
the Economy
& Workforce



Conserve
Natural
Resources



Adapt to a
Changing
Climate



Manage for
Short- and
Long-Term
Success

WHY CLIMATE ACTION IS CRITICAL FOR LOUISIANA

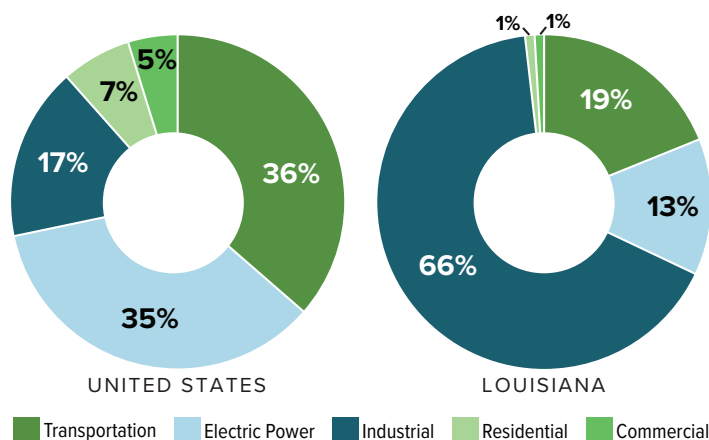
Climate change is a planetary threat being driven by human-induced increases in GHG concentrations in the atmosphere that have raised global temperatures and made extreme weather more common. Louisiana is among the most vulnerable states to the impacts of climate change. Louisianians are already experiencing direct physical, mental, and financial tolls and indirect impacts to social systems and ecosystems that are struggling to cope with extreme weather events, heat, drought, flooding, and other manifestations of climate change. As is the case globally, Louisiana's low-income communities, communities of color, Indigenous peoples, and other marginalized residents are being hit especially hard.

These impacts are projected to get much worse over the coming decades if there is not significant global action to curb GHG emissions. The need for climate action in Louisiana is paramount. Continuing on a business-as-usual course is unacceptable.

Key Climate Impacts for the Southeastern U.S. Highlighted in the 2018 National Climate Assessment:

- 1. URBAN INFRASTRUCTURE AND HEALTH RISKS**, specifically from increased heat, flooding, and vector-borne diseases.
- 2. INCREASING FLOOD RISKS IN COASTAL AND LOW-LYING REGIONS** that will affect property values, the viability of infrastructure, critical industries, and cultural resources.
- 3. TRANSFORMATION OF NATURAL ECOSYSTEMS** due to changing winter temperature extremes, wildfire patterns, sea levels, hurricanes, floods, droughts, and warming oceans.
- 4. ECONOMIC AND HEALTH RISKS FOR RURAL COMMUNITIES**, including vulnerabilities in agricultural, timber, and manufacturing sectors from more regular extreme heat and changing seasonal climates.

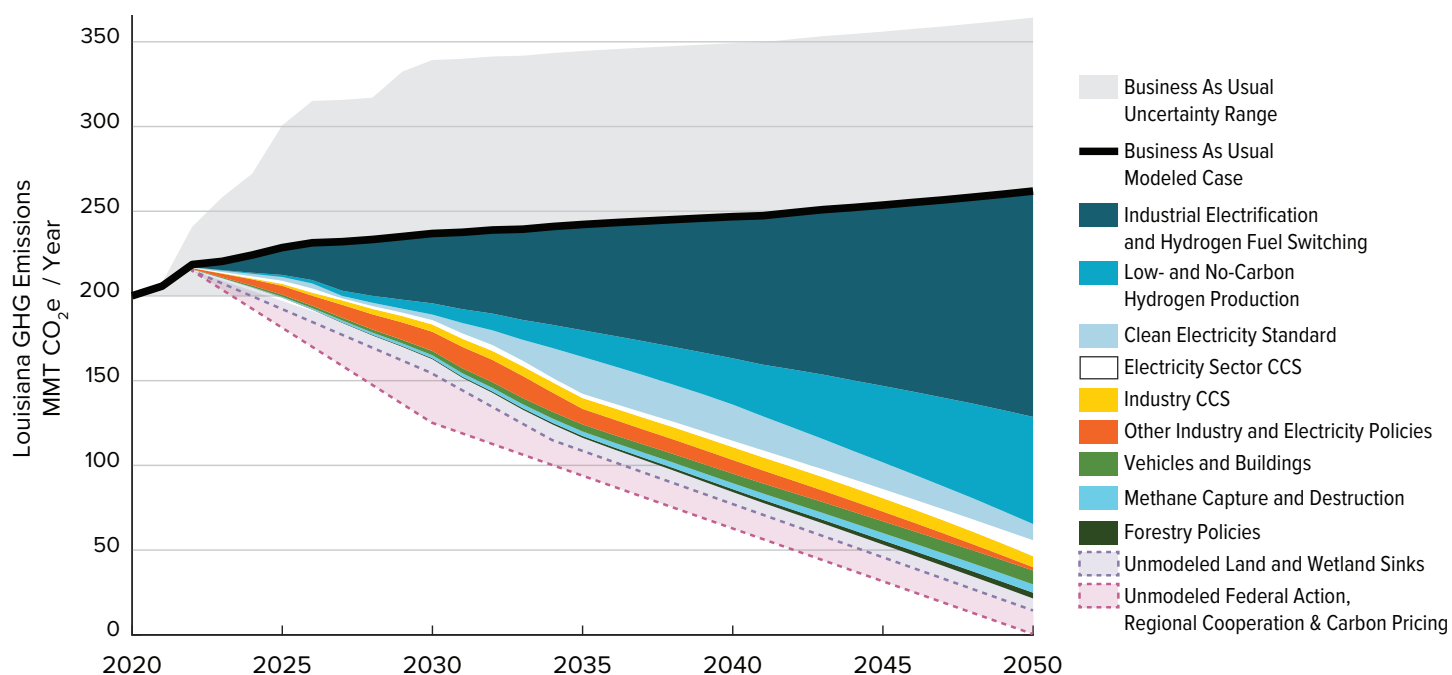
LOUISIANA'S GREENHOUSE GAS EMISSIONS



Louisiana's net GHG emissions in 2018 were 216 million metric tons of CO₂ equivalent (MMT CO₂e).

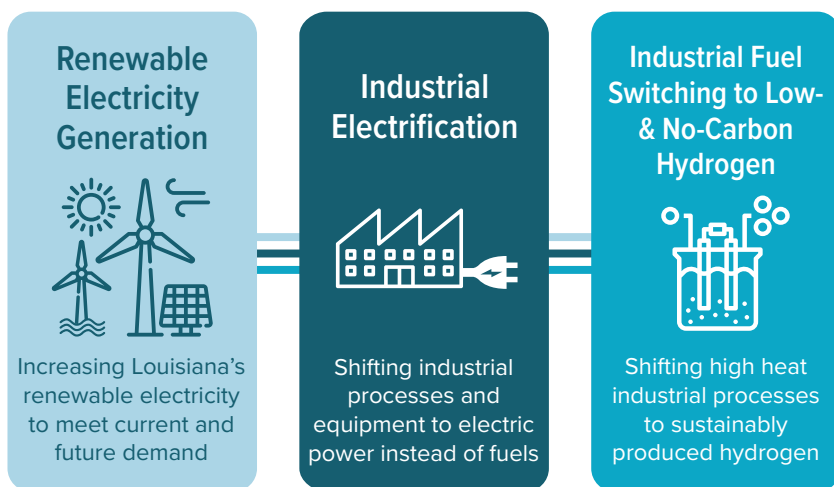
In Louisiana, the industrial sector contributes an overwhelming 66% of overall state emissions. Industrial GHG emissions are widely thought of as the most difficult GHG emissions to abate, and in Louisiana, they account for the significant majority of GHG emissions. Unlike other states, or even national strategies, Louisiana cannot rely primarily on transportation or power sector strategies to address the vast majority of GHG emissions. This unique profile represents a significant challenge for reducing Louisiana's emissions to net zero by 2050.

LOUISIANA'S PATHWAY TO NET ZERO



Louisiana can reach net zero by 2050 by fully, aggressively, and expeditiously implementing the strategies and actions in this plan and closing remaining gaps with additional federal action and regional cooperation. Given the predominance of industrial GHG emissions in the state, Louisiana's ultimate success will hinge upon a holistic and coordinated approach to these **three interconnected policy pillars**: renewable electricity generation, industrial electrification, and industrial fuel switching to low- and no-carbon hydrogen. Louisiana's unique net-zero pathway offers an opportunity to **lead by example for other states and nations in industrial decarbonization**.

As technology advances and actionable science closes research gaps, Louisiana will be able to adaptively manage this plan to further pursue actions that are working to reduce emissions.



LOUISIANA'S KEY CLIMATE POLICY PILLARS

CLIMATE STRATEGIES AND ACTIONS

Immediate, aggressive, and comprehensive action is necessary to reduce Louisiana's GHG emissions to net zero by 2050 and realize social, economic, environmental, equity, and resilience co-benefits for the state. The plan consists of **28 strategies** (high-level approaches), listed below, and **84 actions** (practical and implementable policy steps) focused on the following areas critical to a decarbonized future for Louisiana.



Clean Energy Transition

- 1:** Shift towards a clean, renewable, and resilient power grid.
- 2:** Increase access to and deployment of distributed energy resources.



Industrial Decarbonization

- 3:** Monitor, inventory, certify, and support industrial decarbonization.
- 4:** Improve efficiencies in and modernization of industrial processes and facilities.
- 5:** Accelerate industrial electrification, switching to low- or no-carbon fuels and low- or no-carbon feedstocks.
- 6:** Promote reduced-carbon materials.



Actively Managed Methane Emissions

- 7:** Increase and mobilize resources for decommissioning legacy oil and gas infrastructure.
- 8:** Monitor and regulate methane emissions.



Transportation, Development, and the Built Environment

- 9:** Accelerate adoption and accessibility of low- and zero-emission vehicles and fuels.
- 10:** Reduce vehicle miles traveled and increase transportation efficiencies.
- 11:** Increase urban, rural, and regional public transit service.
- 12:** Coordinate land use planning to reduce sprawl and support healthy and resilient communities.
- 13:** Improve the efficiency and resilience of homes and non-residential buildings.



Natural and Working Lands and Wetlands

- 14:** Preserve and expand natural lands and urban green spaces to maximize climate mitigation and adaptation goals.
- 15:** Restore and conserve Louisiana's coastal wetlands to maximize climate mitigation and adaptation goals.
- 16:** Support the sustainable management and conservation of working agricultural and forestry lands.



An Inclusive, Low-Carbon Economy

- 17:** Build a more inclusive and resilient economy for all Louisiana residents.
- 18:** Strengthen climate education, research, and innovation as a focus of Louisiana's energy transition.
- 19:** Prioritize Louisiana workers and businesses in the transition to a low-carbon economy.



Collaboration and Partnership to Ensure Successful Implementation

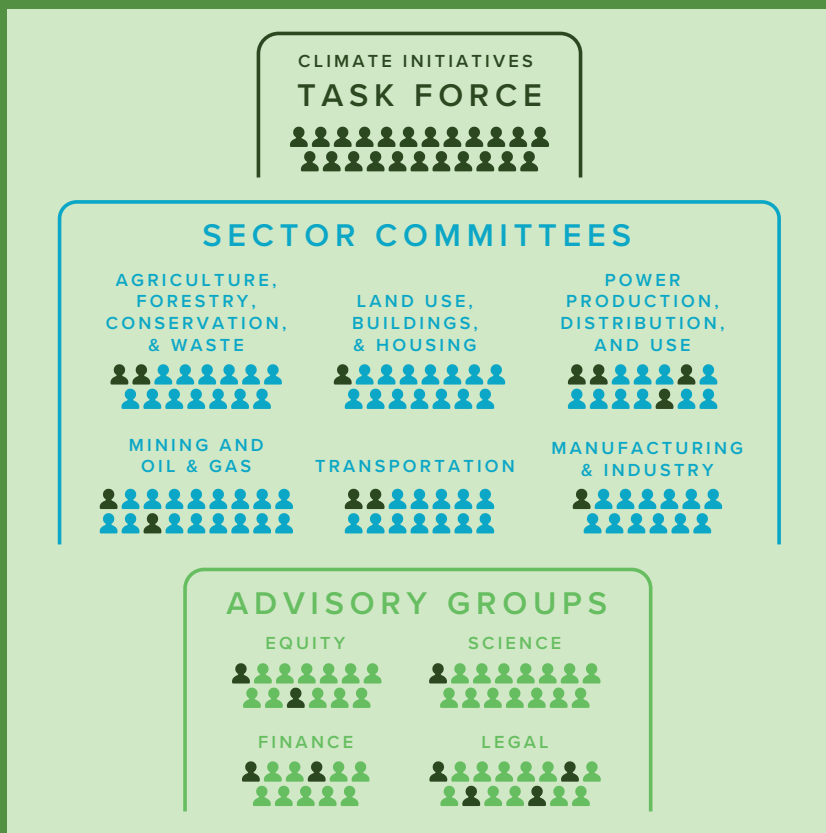
- 20:** Ensure Louisiana is prepared to maximize potential federal funding opportunities.
- 21:** Position Louisiana as a climate leader by engaging in national and regional dialogues and planning.
- 22:** Align climate action approaches across state government.
- 23:** Coordinate action with local government.
- 24:** Call upon the private sector to align their practices and play a leading role in climate action.
- 25:** Improve engagement with and track progress on outcomes for disadvantaged communities and Indigenous peoples.



Accountability and Adaptability to Ensure Lasting Success

- 26:** Advance an equitable, efficient, and sustainable siting and permitting process for new energy and infrastructure projects.
- 27:** Ensure that Climate Action Plan strategies are effectively and transparently implemented.
- 28:** Track progress in reducing net GHG emissions reductions and adapt the approaches taken as needed.

ABOUT THE CLIMATE INITIATIVES TASK FORCE



In August of 2020, Governor John Bel Edwards issued an executive order establishing emission reduction goals of reaching net zero by 2050 in line with those of the Paris Agreement, the federal government, 25 other states, and hundreds of companies in the private sector. Governor Edwards created the Climate Initiatives Task Force and tasked this body with developing a Climate Action Plan to set Louisiana on a path to meet these goals and reduce GHG emissions to net zero by 2050, while seizing the opportunities presented by the global economic shift to zero carbon energy.

The Task Force is made up of government, private sector, academic, environmental, and community justice voices and is supported by six emissions-based sector committees and four cross-sector advisory groups. Louisiana's first Climate Action Plan is the result of a collaborative and intensive 15-month process that included **49 public meetings, 171 action proposals submitted by members and the public, and four month-long public comment periods.** Throughout this effort, Governor Edwards and the Task Force have prioritized broad engagement from **multiple stakeholder voices, transparency and public participation,** and a reliance on the **best available science** and information in order to arrive at a set of **balanced policies** to address this complex and enormous challenge.



FOR MORE INFORMATION

Louisiana Climate Initiatives Task Force Website
gov.louisiana.gov/page/climate-initiatives-task-force

YouTube Channel
youtube.com/c/LouisianaClimateInitiativesTaskForce

Louisiana Greenhouse Gas Inventory
lsu.edu/ces/research/greenhousegasreport2021.php

Louisiana Energy Policy Simulator Modeling Tool
louisiana.energypolicy.solutions

Project Manager: Lindsay Cooper
Lindsay.Cooper@LA.GOV



STATE OF LOUISIANA
 GOVERNOR JOHN BEL EDWARDS